



PRINT ADMIN AND PRINT COUNTING SOFTWARE

Print Job Tracker

Al Jallaf Computers L.L.C.
 Airport Road, P.O. Box 5012
 Dubai, U.A.E.

PHONE: 04- 2829613

FAX: 04- 2821944

E-MAIL: ajc@aljallaf.ae

WEB SITE: <http://www.aljallaf.ae>



HIGHLIGHTS

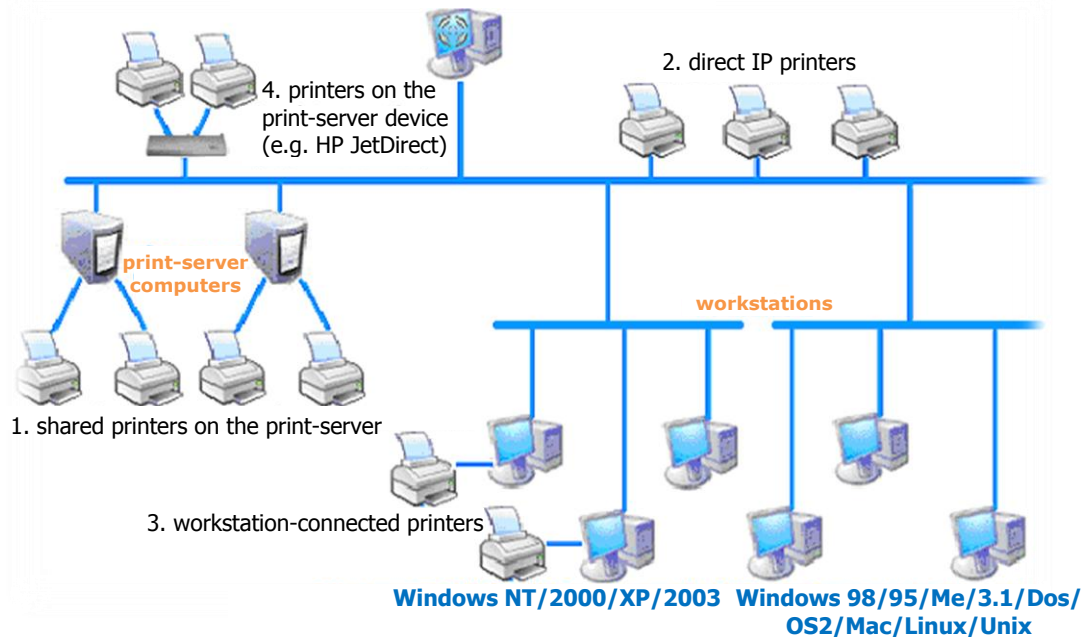
- Support printers of all brands.
- Support all types of printing environments (print server / non print server / direct IP printer / workstation connected printer).
- Track and control print jobs sent from Windows / Linux / UNIX / Mac OS clients.
- Designed for businesses and education institutions of all sizes.
- Centralized print manager used by thousands of businesses and educational facilities.
- Manage, control, monitor, count, quota, restrict and report user printing across your entire network in just a few minutes.
- Alert about printer toner low, out of paper, print error etc.
- Print authentication / client code billing.
- Unlimited client billing codes or project codes.
- Manage and monitor 1-500 printers & print jobs from a single console.
- Support Windows Active Directory domain integration.
- Support MS Access and SQL server (including the free version of SQL server)
- Easy users / groups / quota / rules management.
- 100 reports designed for your print cost analysis and client billing in any language.
- Sending automatic reports by email, including logs of printing activity and analyzed reports of costs.

Why Print Job Tracker?

Print Job Tracker provides easy software solution for print-server and non-print server printing environment i.e. direct IP printing or workstation connected printer. The software is designed to provide centralized print management capabilities for businesses and educational institutions through advanced print control, print monitor, print count and quota, and print audit capabilities. This software can be used with any brand and type of printer, effectively monitors all printer activities and control print jobs sent from Windows / Linux / UNIX / Mac OS clients. Reports generated can be sent in your desired language by email and can also be seen from your web browser.

Print Job Tracker is the software choices choose by majority of our customers when it comes to print management software for day-to-day printer management and control. Discover how it's going to fit with your business.

Centralized Print Manager and Print Counter



Features:

- Supports Windows Print Servers Environment.
- Real-time Print Tracking.
- Client Billing.
- Easy Printer Control and Print Quotas.
- Print Confirmation and Pop up Notification.
- Run As Windows Service.
- Permanent License.



PRINT ADMIN AND PRINT COUNTING SOFTWARE

Print Job Tracker

Al Jallaf Computers L.L.C.
 Airport Road, P.O. Box 5012
 Dubai, U.A.E.

PHONE: 04- 2829613

FAX: 04- 2821944

E-MAIL: ajc@aljallaf.ae

WEB SITE: <http://www.aljallaf.ae>



STANDARD vs. PREMIUM

FEATURES	STANDARD	PREMIUM
Supports Windows Print Servers Environment. Supports Windows NT/2000/XP/2003/Vista/Cluster/2008/ Windows 7 Print Servers.	✓	✓
Supports all brands of printers.	✓	✓
Real-time Print Tracking. Allows centralized tracking, auditing and managing of print jobs for 1 - 750 printers.	✓	✓
Detail Print Job Information. Logs the detail print job information including name of the user who sent the job, the document name, number of printed pages, number of pieces of paper consumed, total cost, submitted time and date, destination printer, name of the computer from which the job was sent, duplex, color, paper size and print job size.	✓	✓
Easy Printer Control. Restricts printing by account status, the maximum allowable pages per print job per printer, document restrictions, computer restrictions, color restriction and print job size restriction.	✓	✓
Easy Print Quotas. Restricts printing by account quota / balance.	✓	✓
Easy Print Charging. Charges print jobs on base cost per page, duplex, color and paper size (including 68 standard paper sizes and 40 undefined paper sizes).	✓	✓
Easy Printer Management. Includes the ability to pause, resume, restart, or cancel one or multiple print jobs on different printers at one time.	✓	✓
Easy-to-use. Does not require any change to your network, workstation, or printer settings in your current printing environment.	✓	✓
Auto Delete. Includes the capability to delete all unclaimed print jobs automatically based on a user-defined time or user-defined policies.	✓	✓
Run As Windows Service. Can be run as a windows service regardless of whether someone is logged on.	✓	✓
Print Job Content Viewer. Allows administrator to view the content of waiting jobs / deleted jobs / printed jobs on the print server and archive the copy of the print jobs.	✓	✓
Move waiting jobs. Allows administrator to move the waiting jobs to a different printer and auto notify the job owner.	✓	✓
Reprint print jobs. Allow administrator to reprint the print jobs.	✓	✓
Easy History Check. Shows the printed jobs / deleted jobs in a user-defined time frame.	✓	✓
Easy Integration with external database. Export print job records to CSV, Excel, HTML, or Text file and sent by email automatically.	✓	✓
Easy Reports. Provides 100 FREE Reports including 64 default reports and 36 customized reports for your print cost analysis. The reports can be created in any language and sent by email automatically. The reports can also be viewed from the web browser.	✓	✓
Easy Access Point. Provides easy access to the printer folder where you can add, remove, or configure local and network printers.	✓	✓
Permanent License.	✓	
Supports IP Printer. Provides the ability to track and control the print job in a non-print-server environment. (Users send the print job to the printer directly via the IP address of the printer using the local port, instead of to the shared printer on the print server computer.)		✓
Supports Workstation-Connected Printer. Includes the ability to track the print job for workstation-connected printers.		✓
Supports Print Server Device. Provides the ability to track and control the print job sent to the print server device. (Users send the print jobs to the printers directly via the print server device, instead of to the shared printer on the print server computer.)		✓
Print Confirmation/ Authentication. Allows confirmation or authentication of print jobs from the workstation before the jobs actually print.		✓
Client Billing. Allows the ability to enter client code from the workstation before the print jobs actually print.		✓
Remaining Balance / Quota Check. Allows users to check their remaining balance / quotas from their workstations.		✓
Change Print Job (Document) Name. Allows the ability to change the print job (document) name before the print job prints.		✓
Popup Notification. Provides the client with popup notification showing the document name, destination printer name, total pages and cost.		✓
Remote Account / Quota Management. Allows administrator / staff to manage users and client codes, add credit and quota, print receipt etc. From any computer remotely.		✓

The key difference is the menu item Print Jobs --> Preferences --> Advanced is enabled in Premium Edition and is disabled in Standard Edition.